

OVERVIEW OF ANAFE

African Network for Agriculture, Agroforestry and Natural Resources Education

GCHERA Meeting, Rome, January,
2011



Background to ANAFE

Establishment

- Established in 1993 by 29 tertiary agricultural institutions with assistance of ICRAF

Membership

- As of 2010, 132 member institutions in 35 African countries

1993-2003

- Mission was to “promote Agroforestry Education”

2003- Present

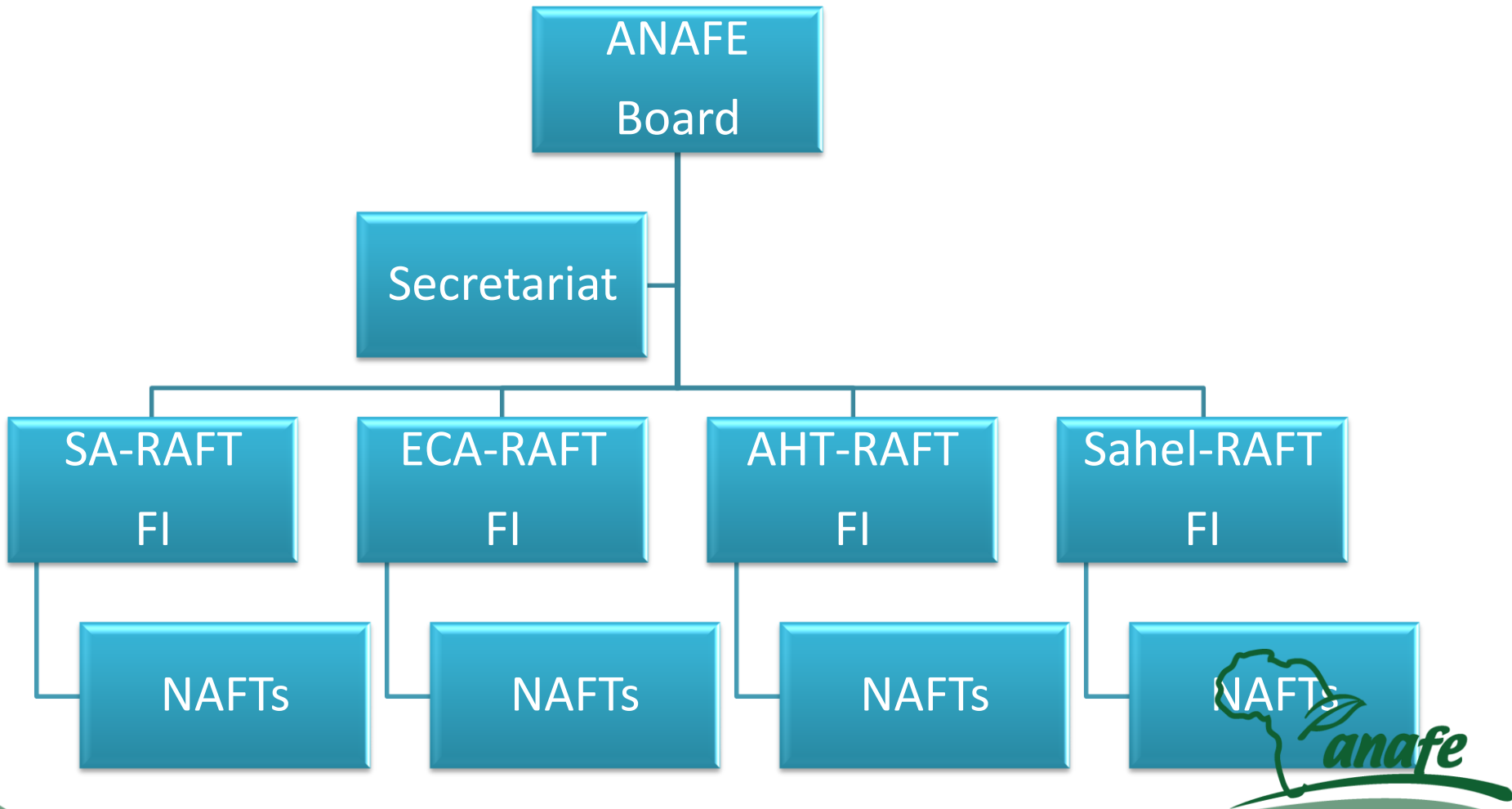
- Mission is “to improve the quality, relevance and application of agricultural education in Africa”

ANAFE Vision, Mission & Objective

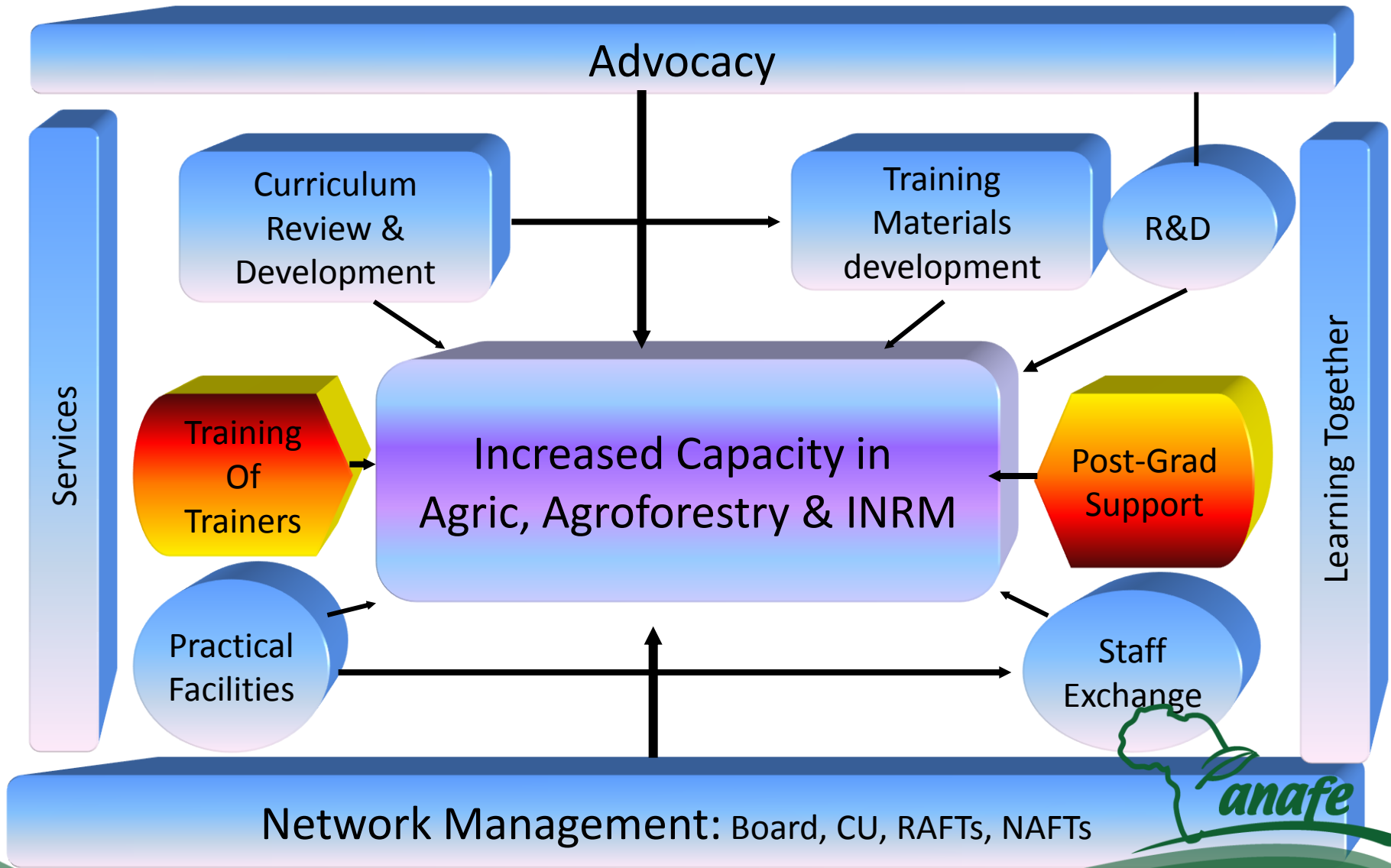
- **Vision**
 - A vibrant network leading in agricultural education for development
- **Mission**
 - To improve the quality, relevance and application of agricultural education for development
- **Objective**
 - Improve in a sustainable manner, the contribution of agricultural education to social and economic development of the African people



ANAFE Organizational Structure



ANAFE Activities



Current Collaborative Projects

(MRCI 2)

Experiential Learning Linking
Education with development)

Revitalizing Forestry Education

Capacity
Building

SCARDA (Strengthening
Capacity for Agricultural
Research and Development in
Africa) (ANAFE/FARA/SADC

UniBRAIN

Linking Universities,
Research and Private
sector in Agriculture

