

The Regional Universities Forum for Capacity Building in Agriculture (RUFORUM)

Platform for mobilising African Universities for Development Relevance

Dr. Moses Osiru
Deputy Executive Secretary
RUFORUM

Presentation to GCHERA ExCo Meeting
10&11 January, 2010



Presentation Outline

- RUFORUM- who we are
- Governance and management
- Core operations



About RUFORUM

- RUFORUM formed in 2004 by Vice Chancellors
- Secretariat in Kampala, Uganda
- Membership of 25 universities in 15 countries

RUFORUM Membership expanded from 12 to 25

1. **Kenya**- Egerton University, Jomo Kenyatta University of Agriculture and Technology, Kenyatta University, Moi University and University of Nairobi;
2. **Malawi**- University of Malawi
3. **Mozambique**- Eduardo Mondlane University
4. **Tanzania**- Sokoine University of Agriculture and Technology
5. **Zambia**- University of Zambia
6. **Zimbabwe**- Africa University and the University of Zimbabwe
7. **Botswana**- University of Botswana
8. **Burundi**- National University of Burundi
9. **DR Congo**- Université Catholique de Bukavu
10. **Ethiopia**- Haramaya University, Mekelle University
11. **Lesotho**- University of Lesotho
12. **Rwanda**- National University of Rwanda
13. **Sudan**- Kordofan University, University of Gezira
14. **Swaziland**- University of Swaziland
15. **Uganda**- Gulu University, Kyambogo University, Uganda Martyrs University, Makerere University

Mission

- *RUFORUM's Mission is to strengthen the capacities of universities to foster innovations responsive to demands of small-holder farmers through the training of high quality researchers, the output of impact -oriented research, and the maintenance of collaborative working relations among researchers, farmers, national agricultural research institutions, and governments.*

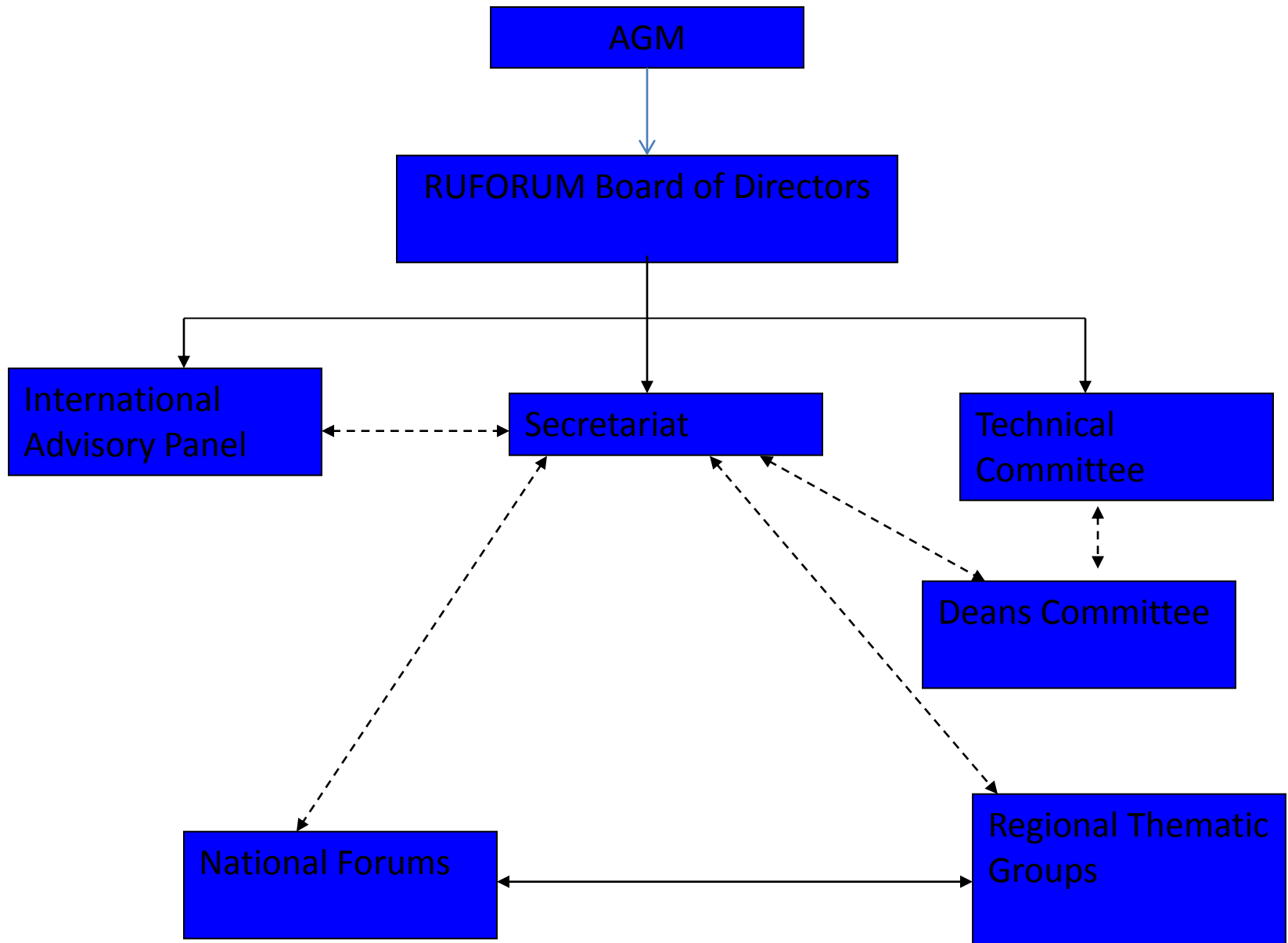
Strategic Goals-2005

- Capacity building (MSc, PhD, Post-doctoral & short courses)
- Rationalized resource use for training & research
- Innovative structures for training, research and outreach
- Impact-oriented research in universities
- Advocacy, coordination & resource mobilization

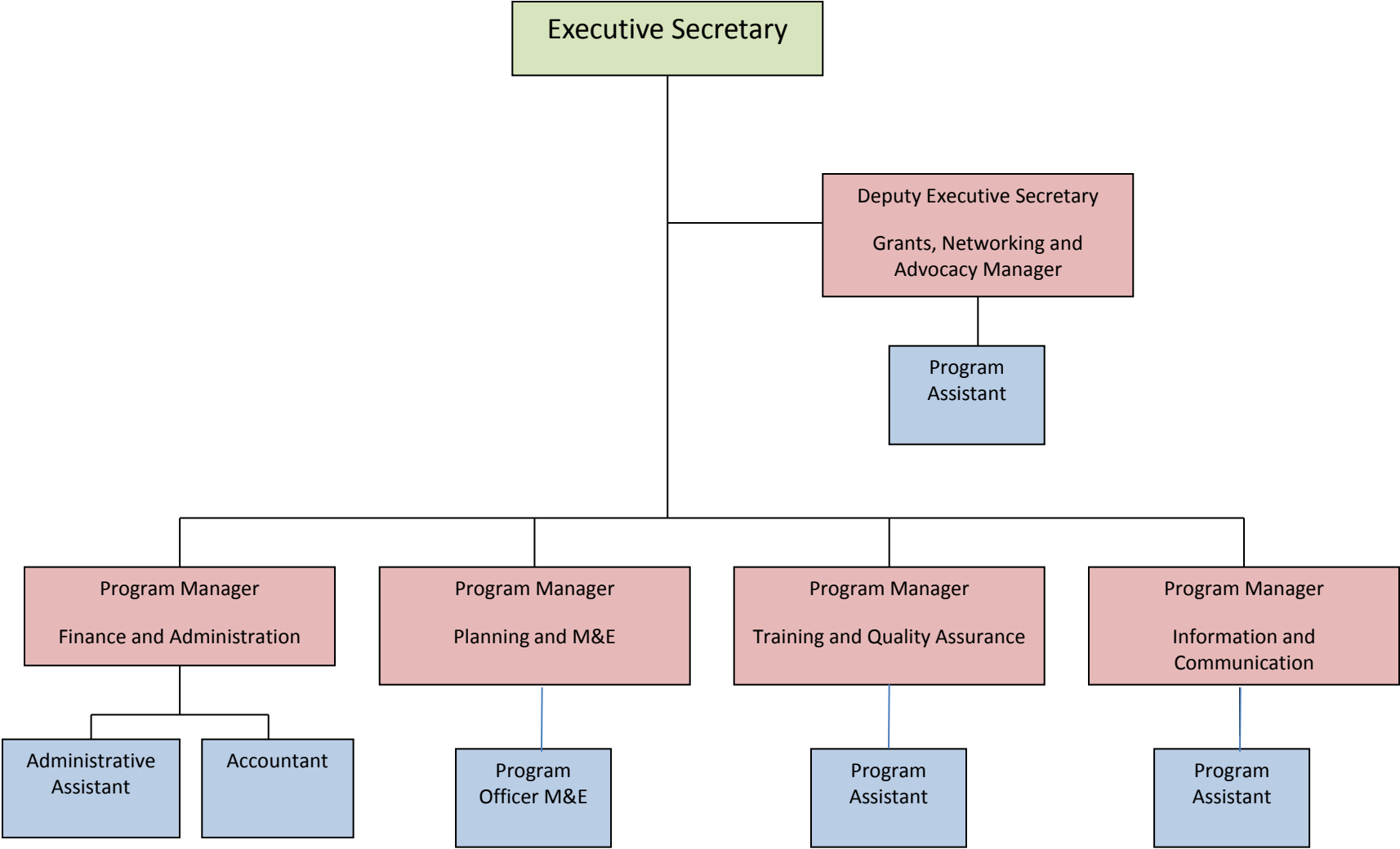
Two Strategic Goals added-2007

1. Increase in the participation and voice of women in agricultural research, production and marketing
2. Increase the use of technology to support effective, decentralized learning and the sharing of knowledge

RUFORUM Governance Structure



RUFORUM Secretariat Organogram



How we operate

- Collective resource mobilisation at Regional level
- Support individual/ groups of universities
- Competitive grants
- Institutional/ nurturing grants

RUFORUM Regional Post Graduate Programmes

MSc

- MSc Plant Breeding and Seed Systems
- MSc Agricultural Information and Communications Management (AICM)
- MSc Research Methods

PhD

- Dryland Resource Management
- Plant Breeding and Biotechnology
- Aquaculture and Fisheries
- Agricultural and Resource Economics
- Soil and Water Management

To be launched 2010

- PhD Agriculture and Rural Innovation Studies
- PhD Food Science and Nutrition

Facets for University Engagement

- Skills enhancement for staff and students
- Improving research methods;
- Enhancing lesson learning and impact orientation: M&E framework and system under development;
- Community Action Research & outreach: focus on value addition, experiential learning and improving curriculum;
- Improving university relevance- Operational guidelines for National Forums established
- Strengthening quality assurance and credit transfer system- ongoing through EDULINK Project
- Strengthening University leadership and management
- Advocacy- Ministerial meeting on higher education

Table 1: Statistics of past and on-going graduate training programmes

Category of Postgraduate Students	Targets for 2013	Trained before 2004 (under FORUM)	Trained during 2004 – 2009 Period (under RUFORUM)
PhD	150	8	6
Female	50	1	2
Male	100	7	4
% Female	30	12	30
MSc	800	250	300
Female	300	50	72
Male	500	200	228
% Female	38	20	24

Partnerships

- Strengthened strategic partnerships with a number of organisations. Some examples;
 - Association of African Universities
 - NEPAD, COMESA, FARA, AFAAS, SROs (ASARECA and SADC), NARS;
 - AgriNatura Universities -WUR, NRI, SupAgro
 - CTA, IFS, FANRPAN, ATPS, KIT
 - AGRA, Danish Development Research Network
 - AAAPD

Acknowledgement

- RUFORUM acknowledges:
 - Africa University and University of Zimbabwe for Organising this meeting
 - Support from the member universities
 - Support from development partners
 - Support from national governments;
 - Support from partners